

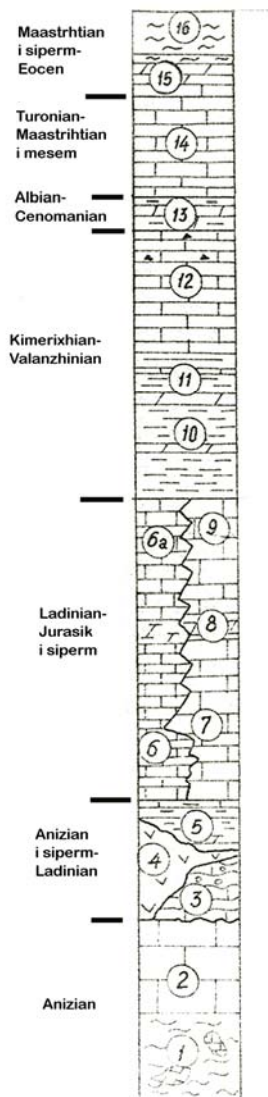
The stratigraphy of Krasta-Cukali Zone

Krasta-Cukali zone is situated from Malesia e Cukalit and continue till Elbasan, Leskovik, Peshkopi and Vermosh too. This zone is divided in 4 sub zones and units.

1. Cukali Sub zone
2. Krasta Sub zone
3. Griteri Unit
4. Vermoshi Unit

Are encountered, Paleozoic, Mesozoic, and few Paleogenic deposits. The Triassic and lower-middle Liassic deposits are of neritic facie, meantime those from Dogger until Maastichtian are of pelagic facie. In lower Triassic are encountered vulcanite and in middle Triassic tuffit.

Lithology and Fauna of Cukali sub zone



Anisian.

1. Wilde flysch with marl and olistolit, cobble and debris limestone, sandstone, vulcanite. (*Macroporellia alpina, diplopore sp.*).
2. Massive algae limestone

Upper Anisian-Ladinian.

3. Nodular, brecciated limestone and amonitico rosso. (*Glomospira densa, Meandrospira*)
4. Vulcanite mafic.
5. Gray, red radiolaritic with tuff and tuffite. (*Amonite*).

Ladinian- upper Jurassic.

6. thin-bedded limestone, 6a) pink color
7. thin-bedded and medium-bedded limestone. (*Halobia*)
8. Marl schist. (*Involutina*)
9. Flaggy, pink limestone.

Kimerixhian-valenzhian.

10. Rreshpe mergelore kalkarenite oolitike dhe mergelore të kuq. (*Protopenelopsis*).
11. Radiolaritë me *Calpionella*.
12. Gëlqeror me *Calpionelidë*.

Kimeridgian - Valanginian.

10. Calcarenite, oolitic marl schist and red marly. (*Protopenelopsis*).
11. Radiolaritic with *Calpionella*.
12. Limestone with *Calpionelides*

Albian-Senomanian.

13. Red schist with radiolaritic. (*Ticinella, rothalipora*)

Turonian-maastrichtian i mesëm

14. Gëlqeror pllakor, biomikritikë me *Globotruncana*.

Turonian-medium maastrihtian.

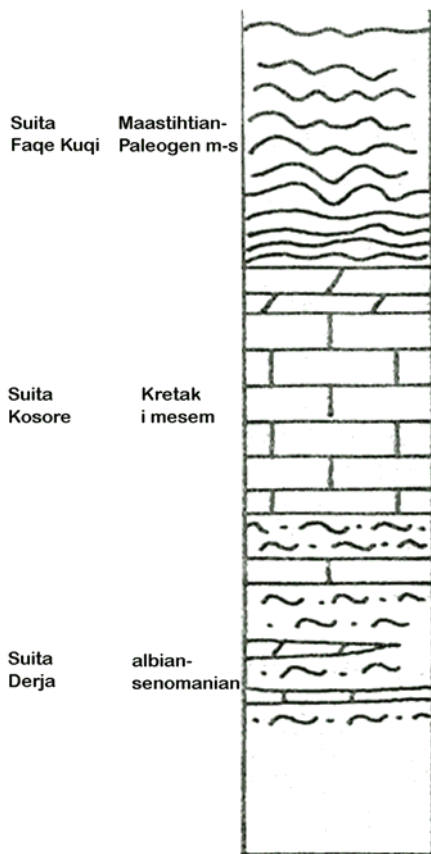
14. Biomicritic, flaggy limestone with *globotruncana*.

Upper maastrihtian-eocene.

15. Passager bed; knitting biomicritic limestone and marl. (*Globotruncidea*).

16. Flysch of Cukali.

Lithology and Fauna of Krasta sub zone



Lower cretaceous.
terrigeno-carbonatic flysch

Upper cretaceous
Pelagic limestone

Maastrichtian-paleocene-eocene.
Packet passager marly.
Terrigeno flysch. (*Globotruncalia ex. gr., ehrenbergiipseudomanardi, G. angulata*).

Kolona permbledhese e Nenzones Krasta
Sipas "Gjeologjia e Shqiperise" A. Vranai etj., 1997